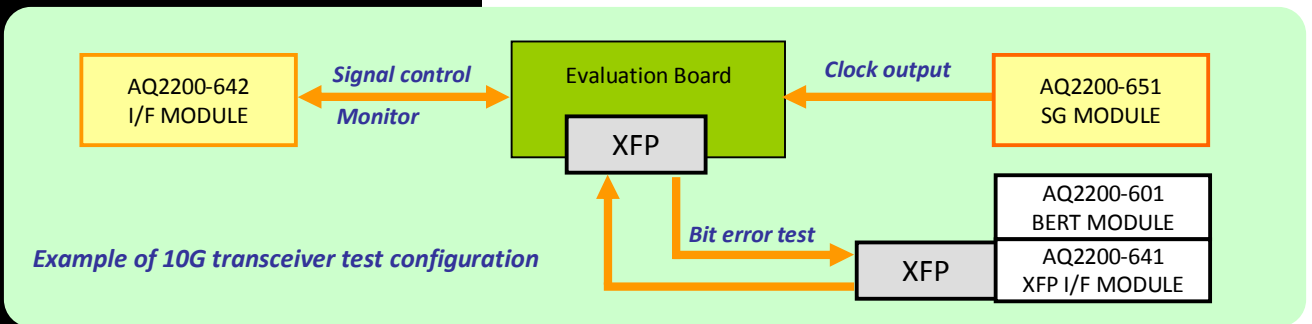
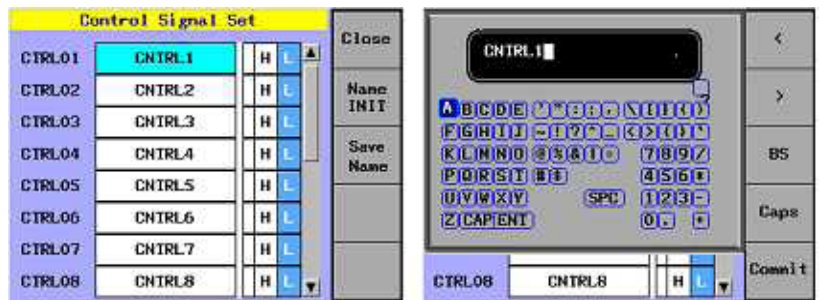


AQ2200 Series Transceiver Interface

AQ2200-642 Transceiver I/F module



Example of parameter setup menu



Power supply, signal control, monitoring for 10G transceiver in one module

- Support 10G optical transceivers
 - XFP, SFP+, XENPAK
- Power supply and power current monitoring
 - Equipped with current limiter
- I2C/MDIO interface
- Signal Control
 - User can define the signal names
- Voltage monitoring of status signals
 - Threshold adjustment for High/Low decision
- Resistance monitoring for APS SET

Specifications

■ Power supply

Name	Range of power supply	Range of current
PS1	+4.750V to +5.250V	0.10A to 1.80A
PS2	+3.135V to +3.465V	0.10A to 3.00A
PS3	+0.800V to +1.890V	0.10A to 1.80A
PS4	-5.460V to -4.940V	0.10A to 3.00A
PS5	Selectable 5.0V/3.0V	0.10A to 1.00A (Selected 5.0V) 0.10A to 2.00A (Selected 3.3V)

■ Signal control

Name	Logic
CTRL01 to 07	1.2V CMOS
CTRL08 to 17	3.3V CMOS

■ Serial bus controller

Name	Signal rate
I2C (SDA, SCL)	100kHz/400kHz
MDIO (MDIO, MDC)	625kHz/1.25MHz/2.5MHz

■ Monitoring

Name	Accuracy *
Power supply monitoring	±(0.2% of reading + 1mV)
Power current monitoring	± (1% of reading + 2mA)
Status signal monitoring	± (1% of reading + 20mV)
Resistance monitoring	± (0.5% of reading + 2Ω)

*Standard operating conditions: 23±2°C Warm up 20min

Ordering information

Model	Suffix	Specifications
735162	-	AQ2200-642 Transceiver I/F module