

WE7081

CAN Bus Interface Module

Overview

This module is used to interpret the CAN protocol and monitor the communication data on the bus or output data on the bus. By using this module in combination with other WE7000 measurement modules, the changes in the communication data on the CAN bus and analog data such as voltage and temperature can be measured simultaneously over time. The measurement results can be graphed and saved to files.

Using the WE7000 in this fashion enables you to grasp the entire data within the system and evaluate the CAN system as a whole.

Features

CAN Data Acquisition

Performs trigger measurements on the specific data of the specified ID (up to 64 channels, up to 1 kS/s). ID, Start bit, Length, and Endian can be specified and conversion to physical values is possible.

CAN Data Output

Download data frames and output.
Manually output data of a specified ID.
Construct a simple sequence function.

Module Linking

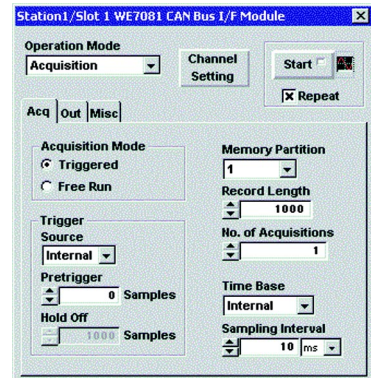
Simultaneous acquisition of CAN bus data and signals of various measurement modules (analog signals) and display them on the same time axis.

Setup Data

Import CANdb setup data.

Standard Specifications

- Number of ports: 1
- Connector Type: D-Sub 9-pin (male)
- Controller: Philips SJA1000 CAN chip
- Transceiver: Built in the module
- Terminator: 124Ω, switch the terminator On/Off using the dipswitch on the front panel
- Data Memory: 8 MB FIFO buffer
- Output Memory: 8 MB FIFO buffer
- Supported Protocol
 - Physical layer: ISO-11898 (High Speed Communication)
 - CAN in Automation: CAN2.0B (Standard & extended message format)
- Save Format of Data: Binary file in WVF (YOKOGAWA measurement standard) format
 - Binary file in WCF (WE7000 CAN Binary Format) format
 - Can be saved in binary or ASCII in CSV format



WE7081

- Bit Rate: 10 k, 20 k, 33.3 k, 50 k, 62.5 k, 83.3 k, 100 k, 125 k, 250 k, 500 k, 800 k, 1 Mbps, and Other
- Time quanta and sample point are selectable
- Endian: Little or Big selectable
- Synchronized Operation: Possible by sharing the trigger signal and clock signal

General Specifications

- Maximum Measuring Input Cable Length: 30 m
- Basic Operating Conditions
 - Ambient temperature: 23±5°C,
 - ambient humidity: 50±10% RH,
 - Supply voltage/frequency error: Within 1% of rating, and after the warm-up time has passed
- Warm-up Time: At least 30 minutes
- Operating Conditions: Same as those of the measuring station
- Storage Conditions: Temperature: -20°C to 60°C
- Humidity: 20% to 80%RH
- Power Consumption: 5 VA (typical value* at 100 V/50 Hz)
- Weight: Approx. 0.7 kg
- External Dimensions:
 - Approx. 33(W)× 243(H) × 232(D) mm (projections excluded)
- Number of Used Slots: 1
- Standard Accessories: User's Manual (this manual) (1)

* Typical value represents a typical or average value. It is not strictly guaranteed.

CANdb and CANdb++ are registered trademarks of Vector Informatik GmbH.

Available Model

Model	Description
707081	CAN Bus Interface Module

■ Dimensions

